



MONTHLY UPDATE

NOVEMBER 2023 PRODUCTION & TRANSPORTATION

Published: November 14, 2023
Justin J. Kringstad, Director
North Dakota Pipeline Authority
Office: 701.220.6227
www.northdakotapipelines.com

MONTHLY UPDATE

NOVEMBER 2023 PRODUCTION & TRANSPORTATION

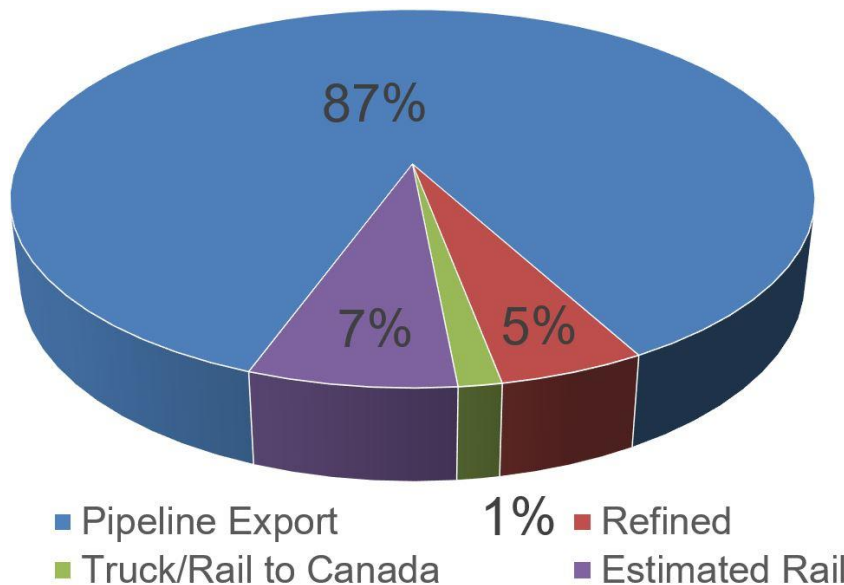
North Dakota Oil Production

Month	Monthly Total, BBL	Average, BOPD
Aug. 2023 - Final	37,932,112	1,223,617
Sep. 2023 - Prelim.	38,345,706	1,278,190

North Dakota Natural Gas Production

Month	Monthly Total, MCF	Average, MCFD
Aug. 2023 - Final	102,700,479	3,312,919
Sep. 2023 - Prelim.	103,208,514	3,440,284

Estimated Williston Basin Oil Transportation, Sep. 2023



CURRENT DRILLING ACTIVITY:

NORTH DAKOTA¹

35 Rigs

EASTERN MONTANA²

3 Rigs

SOUTH DAKOTA²

0 Rigs

SOURCE (NOV 14, 2023):

1. ND Oil & Gas Division
2. Baker Hughes

PRICES:

Crude (WTI): \$82.46

Crude (Brent): \$85.63

NYMEX Gas: \$3.10

SOURCE: BLOOMBERG
(NOV 14, 2023 2:15PM EST)

GAS STATS*

95% CAPTURED & SOLD

4% FLARED DUE TO
CHALLENGES OR
CONSTRAINTS ON EXISTING
GATHERING SYSTEMS

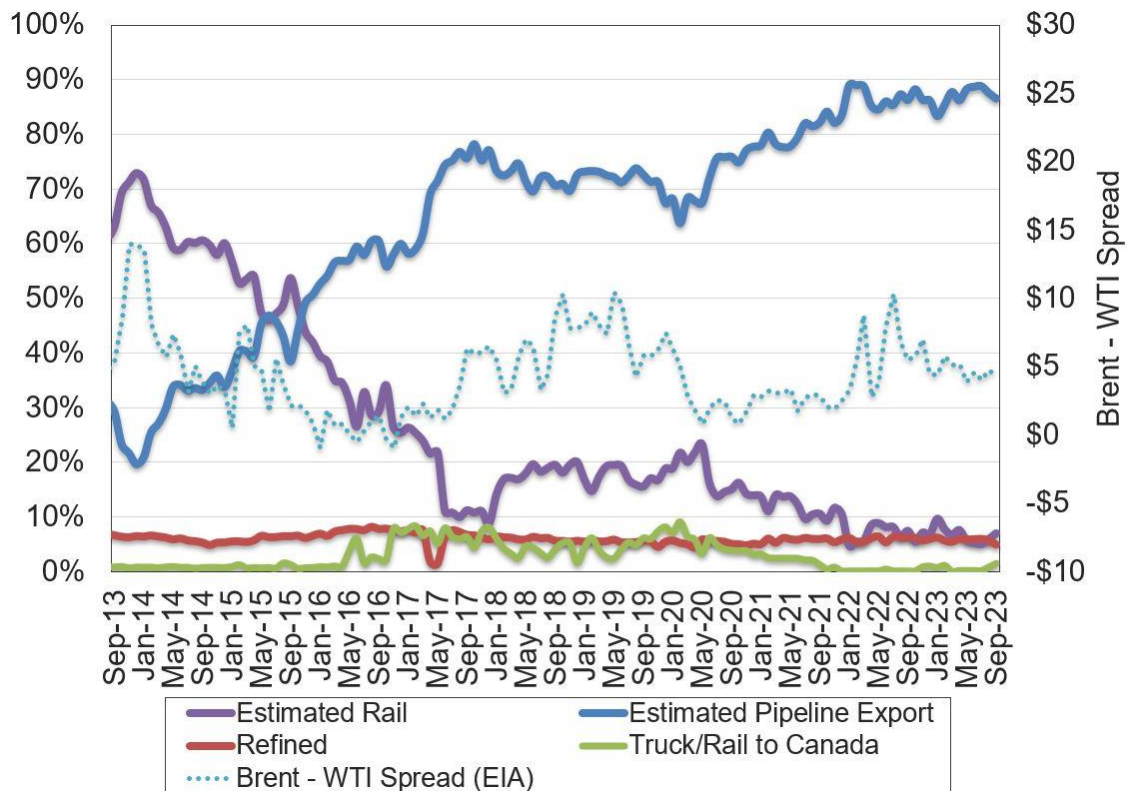
1% FLARED FROM WELL
WITH ZERO SALES

*SEP 2023 NON-CONF DATA

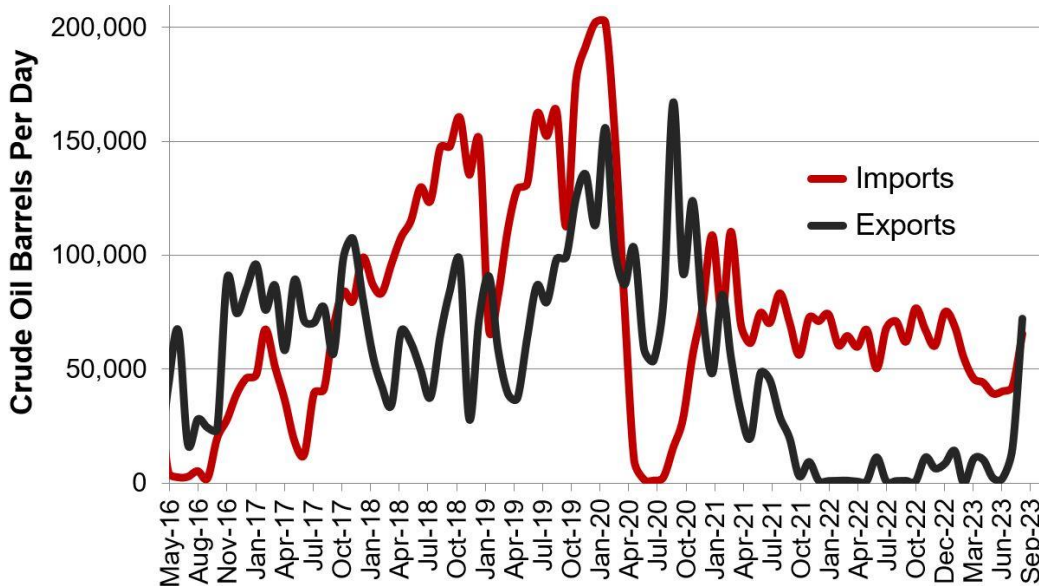
Estimated North Dakota Rail Export Volumes



Estimated Williston Basin Oil Transportation

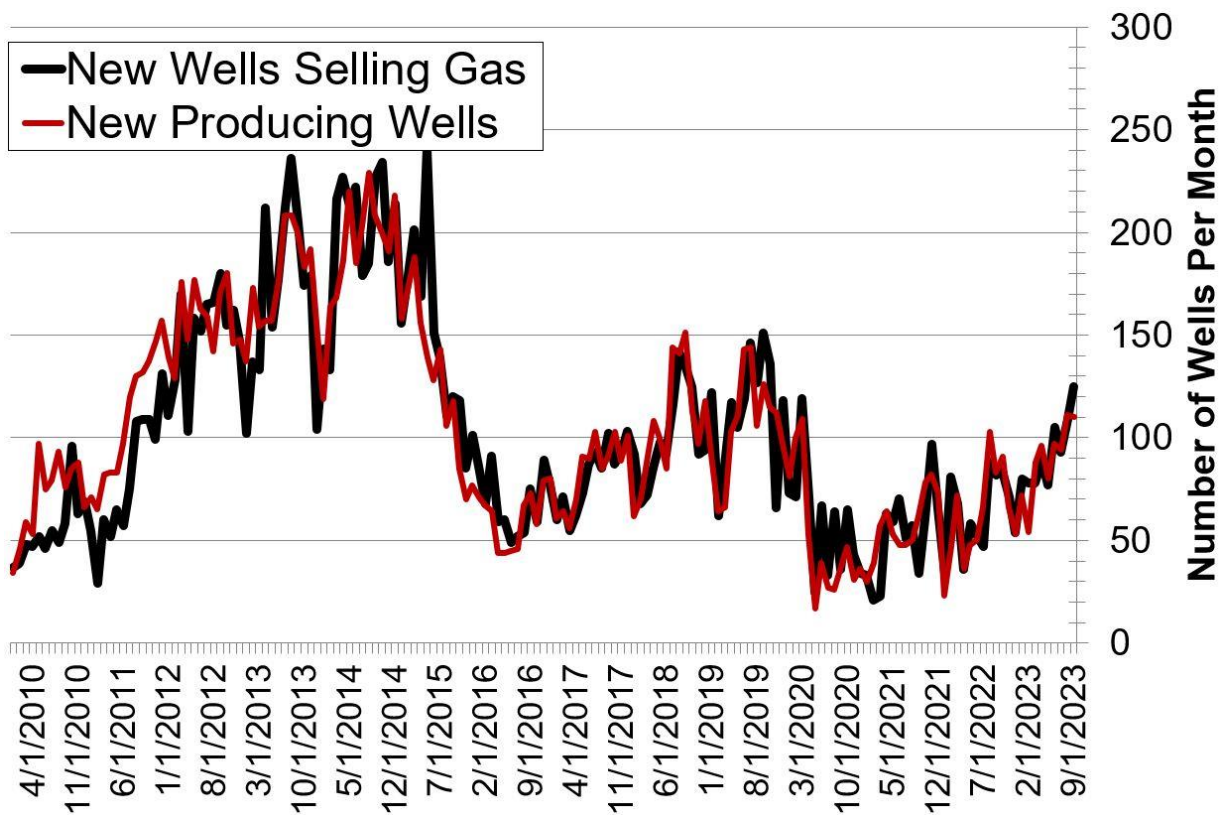


Williston Basin Truck/Rail Imports and Exports with Canada



Data for imports/exports chart is provided by the US International Trade Commission and represents traffic across US/Canada border in the Williston Basin area.

New Gas Sales Wells per Month



US Williston Basin Oil Production, BOPD

2022

MONTH	ND	EASTERN MT*	SD	TOTAL
January	1,091,931	51,895	2,709	1,146,535
February	1,095,503	51,175	2,742	1,149,420
March	1,129,936	54,768	2,709	1,187,413
April	908,697	54,121	2,338	965,156
May	1,062,228	53,276	2,648	1,118,152
June	1,099,366	63,256	2,764	1,165,386
July	1,073,624	60,614	2,774	1,137,012
August	1,075,801	60,587	2,756	1,139,144
September	1,126,138	58,103	2,679	1,186,920
October	1,122,122	54,284	2,621	1,179,027
November	1,098,415	57,734	2,682	1,158,831
December	957,864	56,738	2,199	1,016,801

2023

MONTH	ND	EASTERN MT*	SD	TOTAL
January	1,062,880	62,094	2,610	1,127,584
February	1,159,036	63,536	2,475	1,225,047
March	1,124,897	64,580	2,652	1,192,129
April	1,135,840	61,897	2,557	1,200,294
May	1,135,761	60,760	2,560	1,199,081
June	1,168,269	58,889	2,274	1,229,432
July	1,181,513		2,310	
August	1,223,617			
September	1,278,190			
October				
November				
December				

* Eastern Montana production composed of the following Counties: Carter, Daniels, Dawson, Fallon, McCone, Powder River, Prairie, Richland, Roosevelt, Sheridan, Valley, Wibaux