



MONTHLY UPDATE

JANUARY 2014 PRODUCTION & TRANSPORTATION

Published: March 13, 2014
Justin J. Kringstad, Director
North Dakota Pipeline Authority
Office: 701.220.6227
www.northdakotapipelines.com

MONTHLY UPDATE

JANUARY 2014 PRODUCTION & TRANSPORTATION

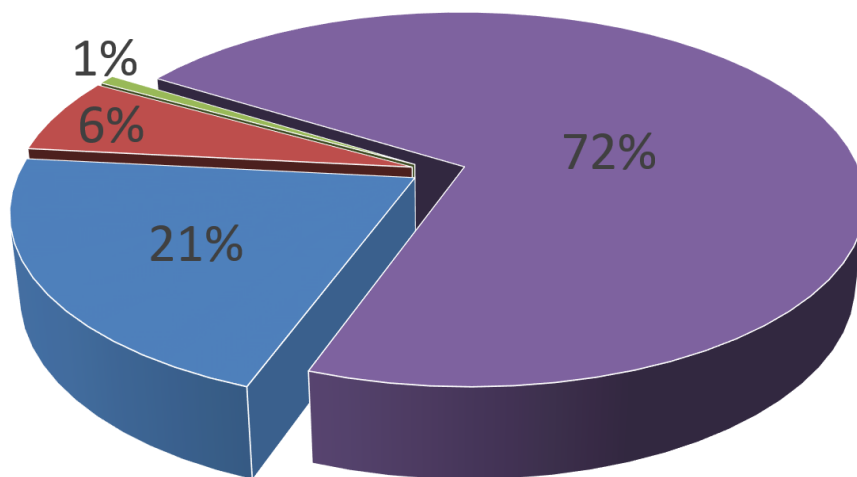
North Dakota Oil Production

Month	Monthly Total, BBL	Average, BOPD
Dec 2013 - Final	28,727,304	926,687
Jan 2014 - Prelim.	28,926,977	933,128

North Dakota Natural Gas Production

Month	Monthly Total, MCF	Average, MCFD
Dec 2013 - Final	30,736,712	991,507
Jan 2014 - Prelim.	31,258,739	1,008,346

Williston Basin Crude Oil Transportation, Jan. 2014



■ Estimated Pipeline Export ■ Tesoro Refinery
■ Truck to Canadian Pipelines ■ Estimated Rail

CURRENT DRILLING ACTIVITY:

NORTH DAKOTA¹

193 Rigs

EASTERN MONTANA²

7 Rigs

SOUTH DAKOTA²

0 Rigs

SOURCE (MAR 13, 2014):

1. ND Oil & Gas Division
2. Baker Hughes

PRICES:

Crude (WTI): \$98.28

Crude (Brent): \$107.71

NYMEX Gas: \$4.45

SOURCE: BLOOMBERG

GAS STATS*

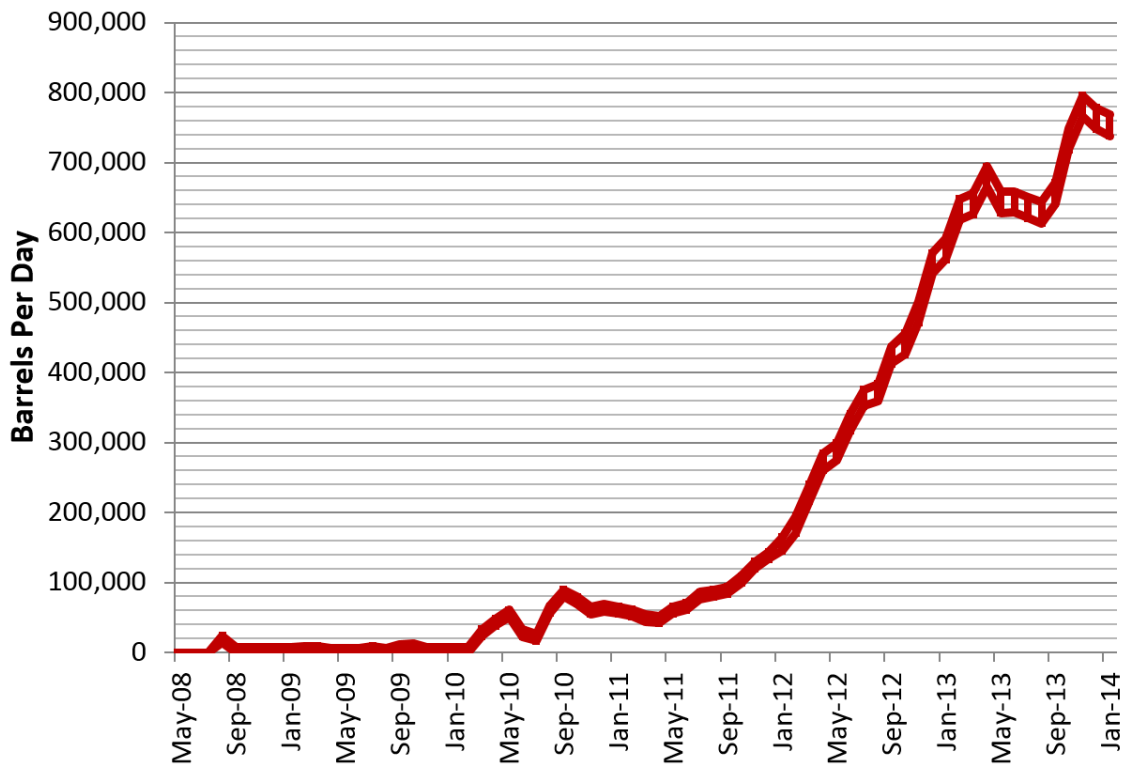
65% CAPTURED & SOLD**

17% FLARED DUE TO CHALLENGES OR CONSTRAINTS ON EXISTING GATHERING SYSTEMS

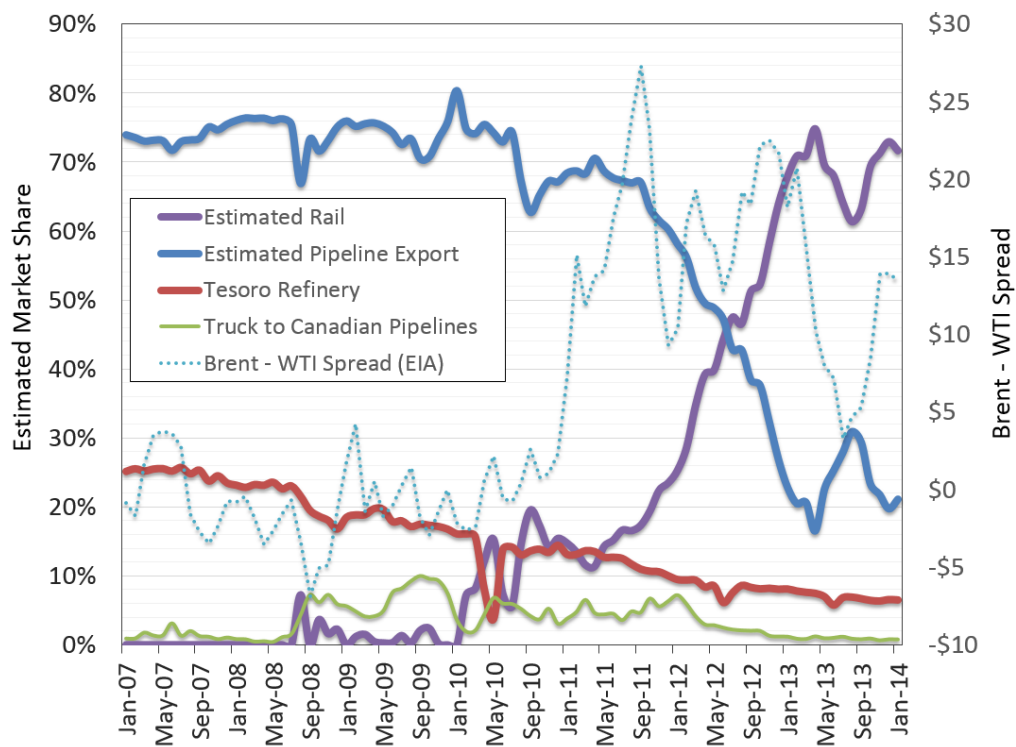
18% FLARED FROM WELL WITH ZERO SALES

*JAN 2014 NON-CONF DATA
**HESS GAS PLANT SHUTDOWN

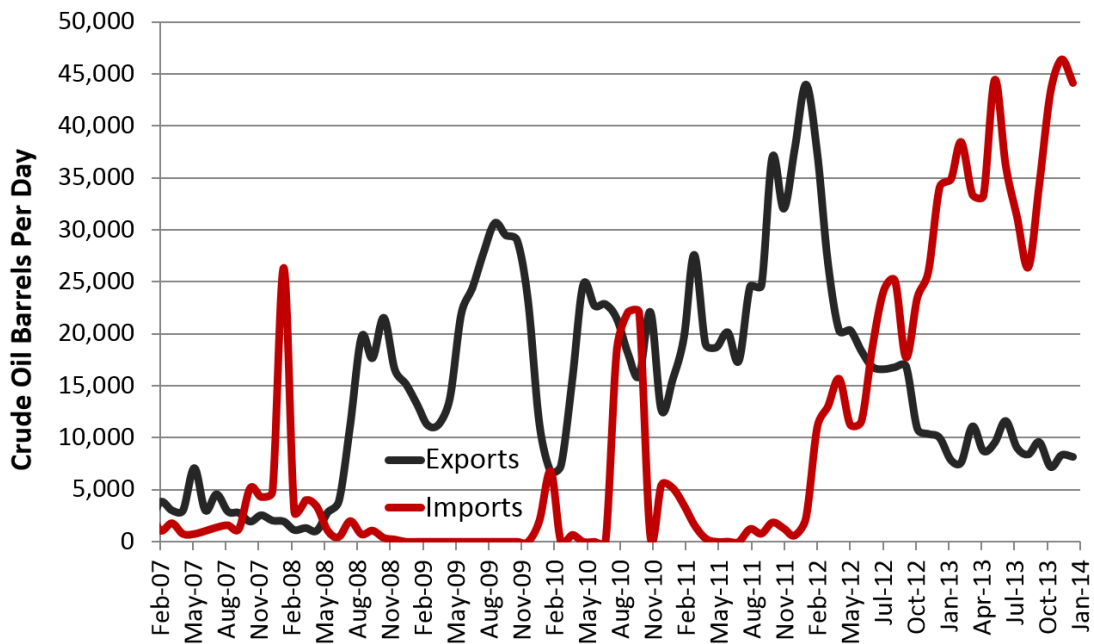
Estimated North Dakota Rail Export Volumes, January 2014



Estimated Williston Basin Oil Transportation

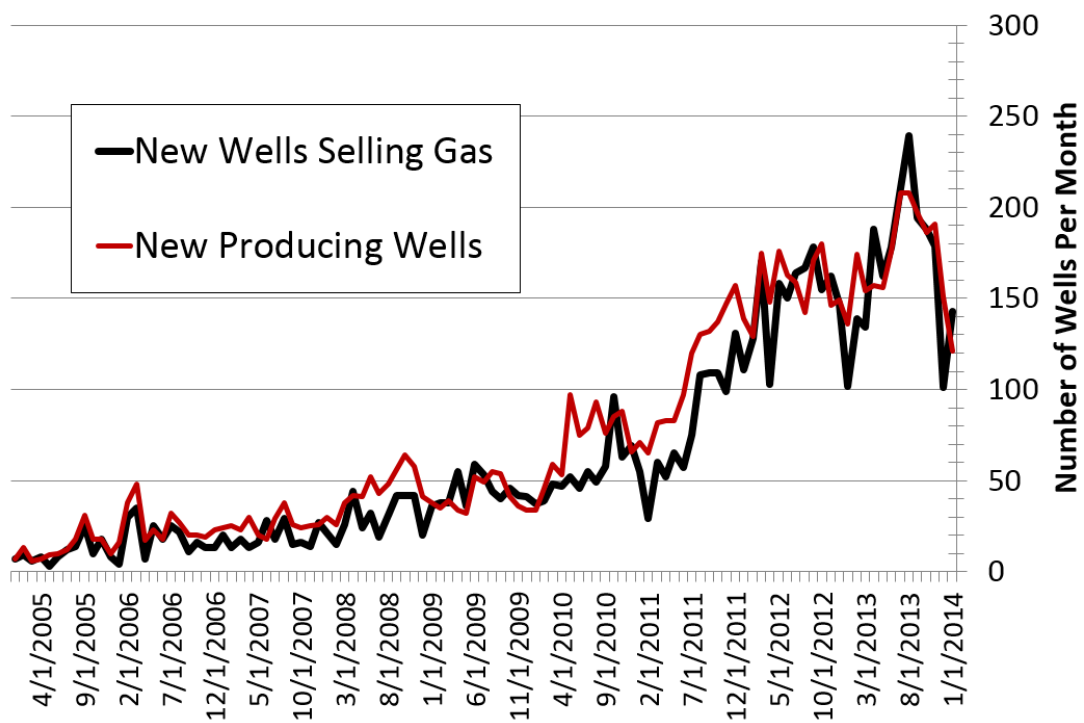


Williston Basin Truck Imports and Exports with Canada



Data for truck imports/exports chart is provided by the US International Trade Commission

New Gas Sales Wells per Month



US Williston Basin Oil Production, BOPD

2013

MONTH	ND	EASTERN MT*	SD	TOTAL
January	739,086	70,598	4,617	814,301
February	781,356	71,850	4,891	858,097
March	786,493	73,416	5,111	865,020
April	793,794	76,035	5,131	874,960
May	812,008	75,067	4,800	891,875
June	823,300	73,547	4,781	901,628
July	874,042	75,881	4,678	954,601
August	912,584	75,939	4,877	993,400
September	933,997	73,932	5,017	1,012,946
October	945,452	73,010	4,643	1,023,105
November	976,453	71,612	5,026	1,053,091
December	926,687	68,417	4,801	999,906

2014

MONTH	ND	EASTERN MT*	SD	TOTAL
January	933,128			
February				
March				
April				
May				
June				
July				
August				
September				
October				
November				
December				

* Eastern Montana production composed of the following Counties: Carter, Daniels, Dawson, Fallon, McCone, Powder River, Prairie, Richland, Roosevelt, Sheridan, Valley, Wibaux